

# THE HOMER BUILDING

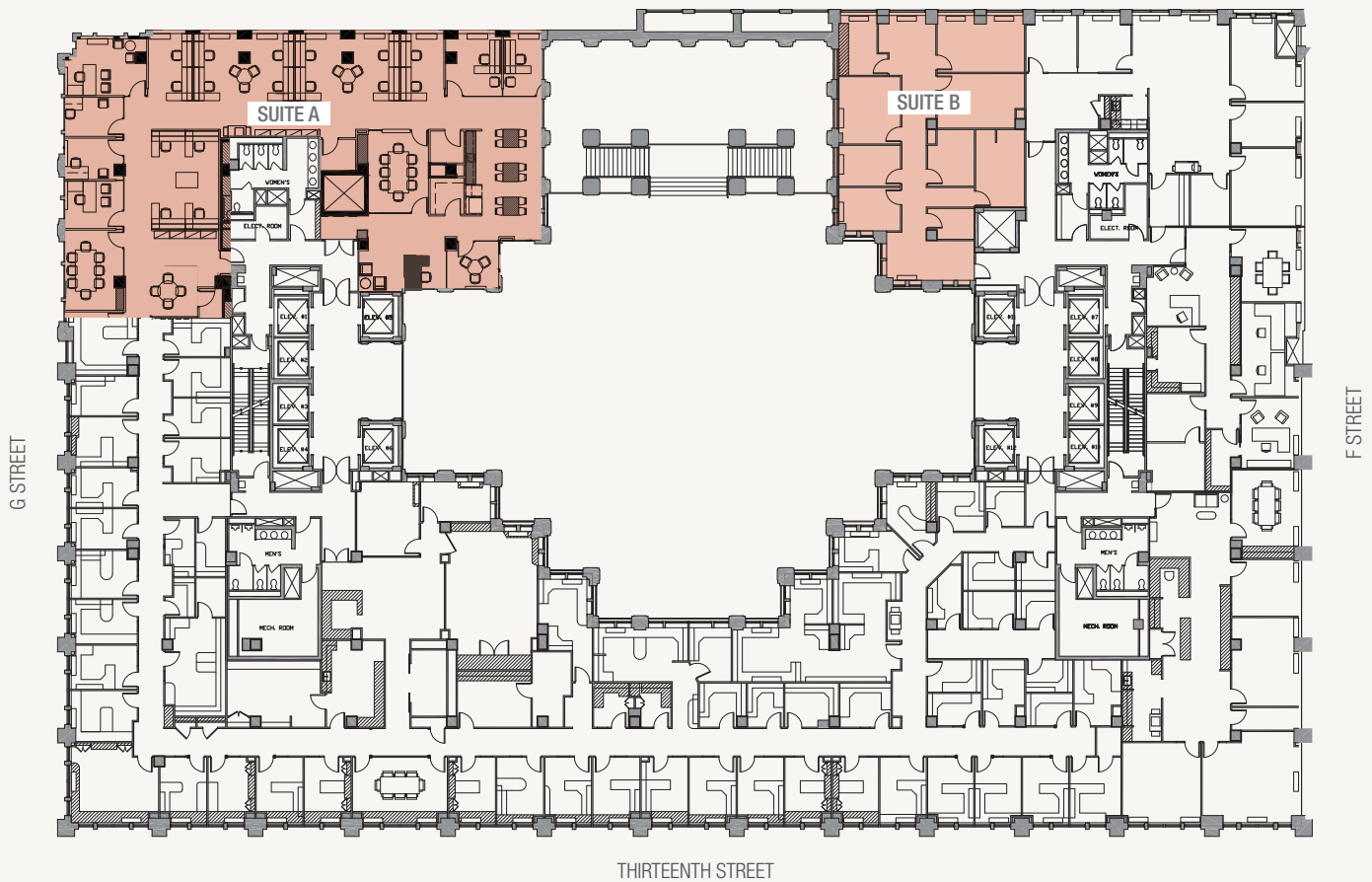
## THIRD FLOOR

SUITE A: 5,786 SF | Available Immediately | 5–10 years

☼ G Street and atrium window line

☼ Direct elevator exposure

SUITE B: 2,444 SF | Available Immediately | 3–10 years



THE HOMER BUILDING | 601 THIRTEENTH STREET, NW  
WIL PACE | 202.624.8649 | WPACE@AKRIDGE.COM  
TIM MCCARTY | 202.207.3949 | TMCCARTY@AKRIDGE.COM

**AKRIDGE**  
Invested.